

26<sup>th</sup> Annual  
*Tools Of The Trade*

**Angus Bull & Female Sale**

Wednesday, March 17, 2021 - 1:00 PM

Held at the Ranch near Dundurn, SK



**WILBAR**  
CATTLE CO.



## Welcome from Wilbar Cattle Co.



*Bryan, Tracey, Kylie & Owen*

Welcome to our 26th Annual Tools of the Trade Bull and Female Sale! Thank you to everyone who has supported our program over the years. Whether you are a many time repeat customer or are receiving our catalogue for the first time, we appreciate you!

Our cow herd and sale offering are built with you, our customers in mind. We work every day, planning every breeding decision to bring sound, attractive, functional and profitable breeding pieces to your operations. Every year, we apply even stricter culling criteria and focus on the genetics that work to elevate our cow herd and as a result, the bulls and heifers on offer today.

Where to begin following one of the most interesting years in modern history? 2020 was certainly a year of unknowns, anxiousness and fear but it was also a year of resilience. In times like these, we are reminded of how much we love our business and how grateful we are for it. In spite of the world's problems, we worked as a family to continue the legacy of the generations before us. Honestly, it doesn't get any better than that. We are a family oriented industry and its something we can all be very proud of.

We are excited about our offering this year and feel that it is without a doubt our most impressive to date. New sires including Denver Champion South Point, Executive Decision, Coming In Hot and

Crackerjack highlight the bull pen this year. As always the bulls are good footed, soft made, hairy, docile and sound. Their mothers are well made cows, built with udder quality, fleshing ability and overall production in mind. The cow herd is something we take a lot of pride in. Working with multi generation cow families that date back almost 60 years, you can rest assure our cattle stand the test of time.

The bulls have been developed on a forage based diet with longevity in mind. The ration was formulated with guidance from Bullseye Feeds. It consists of cereal silage, brown oats, tub ground hay and protein/mineral supplement to ensure proper growth and development. This ration promotes excellent hair coats, fertility, libido and foot quality. The bulls are in large pens that allow plenty of space for exercise.

Once again there will be a uniform group of April/May born commercial open heifers for sale. They come from purebred black and red Angus cows representing the best of our proven genetics. There is a slightly smaller number due to the dispersal of our commercial cow herd in the spring of 2019 but they are high quality. We will continue to grow the commercial herd back up in numbers as the available grass and moisture conditions dictate.

As always, the bulls are sire verified, fertility tested, carcass evaluated and performance tested. Our goal is to provide you the information you require to make the best selection to fit your needs.

The bulls, heifers and cow herd are always available for viewing and we welcome your visit. If you are unable to join us sale day, we invite you when it suits your schedule to go through the bulls, make your selections ahead of time and join us on DLMS. We or the sales staff would be happy to help you out any way we can.

Thank you for your interest in our program. We know there are a lot of bulls for sale and we appreciate you selecting, for the first time or the 26th time, a Wilbar bull.

Bryan, Tracey, Kylie and Owen Willms

## From The Desk At T Bar

Welcome to the 26th Annual "Tools of the Trade" Angus Bull and Female Sale, Wednesday, March 17, 2021 at the ranch headquarters, Dundurn, Saskatchewan presented by Wilbar Cattle Co. Established in 1963, Wilbar has been a household name for over half a century, producing some of the nation's finest Angus breeding stock. Their successful track record is backed by a tremendous cow herd which has been built over six decades and several generations of the Willms family.

The sale is aptly named; in all industries, tradesmen require the latest and sharpest equipment to output a high standard of product. The folks at Wilbar understand the need for their many customers to get the newest, sharpest genetics to add value into their breeding program. Each year, Bryan and Tracey search for the finest in the breed. The 2021 edition of "Tools of the Trade" offers exciting progeny of several new sires. South Point, the North American Champion, Executive Decision, Cracker Jack and Coming in Hot... with the choice lots sure to arouse interest. But let us not overlook the sons of the proven sires that have made this program powerful.

If you are looking for black or red yearlings or the late-born two-year-olds, the pens are full of opportunity and selection. Writing this welcome with it being minus fifty with the windchill, the first thing that comes to mind is hair... hairy, loose hided, thick topped, with lots of muscle and volume. Their uniformity and body type must be credited to the great cow herd bred with high maternal values and problem free, whether it be calving or fertility. If you are a seedstock producer looking for your next herd changer or a commercial producer who would like to add performance at weaning and value in the replacement pasture, "Tools of the Trade" is an event you cannot miss... mark March 17th on your calendar.

Stop by the ranch anytime prior the sale for a preview of the bulls and see their mothers as they will be nearby or give the folks at Wilbar a call to discuss the offering and which bulls or females will fill your breeding needs. Remember... to do a good job you need the proper tools!

If we may be of assistance, prior to or sale day, feel free to contact any of the T Bar team or myself, we will help you in a professional manner.

Chris Poley



Chris Poley: 306.220.5006



Shane Michelson: 403.363.9973



Ben Wright: 519.374.3335

# Tools of the Trade

## ANGUS BULL SALE

Wednesday, March 17, 2021 1:00 p.m.  
At The Farm, Near Dundurn, SK

### SELLING 97 HEAD

57 Red & Black Angus Yearling Bulls  
10 Two Year Old Bulls  
30 Commercial Heifers

### SALE DAY PHONES...

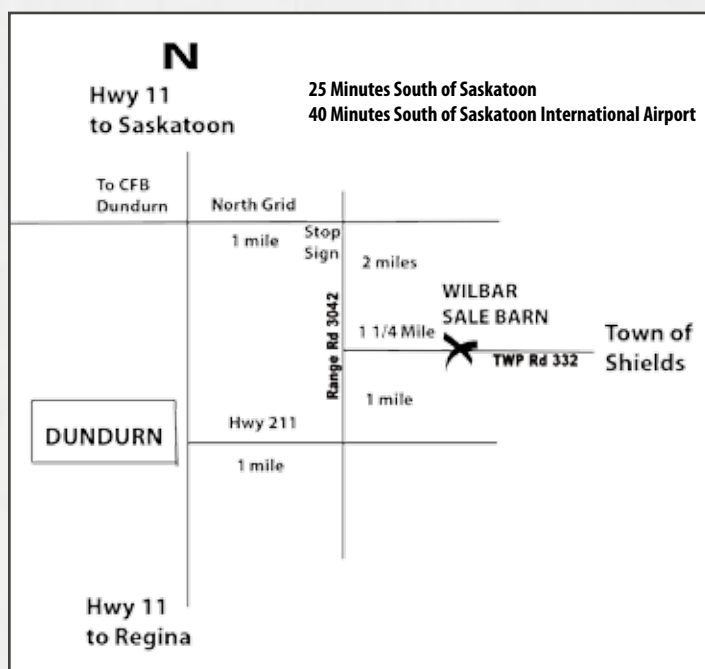
Bryan Willms 306.492.7504  
Tracey Willms 306.380.6772

### SALE STAFF...

Chris Poley, Auctioneer T Bar C Cattle Co. Ltd.	306.220.5006
Shane Michelson, Ringman T Bar C Cattle Co. Ltd.	403.363.9973
Ben Wright T Bar C Cattle Co. Ltd.	519.374.3335
Chad Wilson T Bar C Cattle Co. Ltd.	306.577.1256
Nate Marin, Ringman	306.869.7130
Shane Castle, Castlerock Marketing	306.741.7485
Mark Forsyth, Castlerock Marketing	306.784.7844
Roger Peters, Peterosa Exports	403.828.9815

### INSURANCE PROVIDED BY...

Canadian Farm Insurance Corp., Jill Wildman 780.305.1146



View the bulls, heifers and the cow herd  
any time at the farm.  
Visitors always welcome!



Bryan, Tracey, Kylie and Owen Willms  
Box 176, Dundurn, SK S0K 1K0  
(Bryan) C: 306.492.7504  
(Tracey) C: 306.380.6772  
E: wilbarcattle@gmail.com  
www.wilbarcattle.com

Raising Registered Angus Since 1963



Box 2330  
Warman, SK S0K 4S0  
Ph: 306.933.4200  
Fax: 306.934.0744  
info@tbarc.com  
www.buyagro.com

Can't make it to the sale?  
Internet Bidding Available.

To view this sale visit [www.dlms.ca](http://www.dlms.ca), Fill out the registration form located under registration and sign-up for your free user account and select a username and password.

BIDDERS - To be approved as a bidder, Log in to [dlms.ca](http://dlms.ca) and click BUYER APPROVAL tab, select the sale you are interested in bidding at and click sign up.

For more information  
Call DLMS Reps:  
Mark Shologan - 780-699-5082 or  
DLMS Purebred Team 780.991-3025

**DLMS**  
[www.dlms.ca](http://www.dlms.ca)



# Choice Lot

1

WILBAR *Executive Order* 835H



03/02/2020  
WJD 835H  
2162357

BAR-E-L NATURAL LAW 52Y  
PM EXECUTIVE DECISION 5'17  
PM BLOSSOM 124'13

WILBAR TIGERSHARK 420Y  
WILBAR MAYFLOWER 507B  
WILBAR MAYFLOWER 48Z

- Executive Order is possibly the most complete bull in the offering, he's pretty tough to fault
- Loose hided, tons of dimension and exceptional feet
- Ranks among the best bulls we've raised
- Dam is CAA Premier Elite donor with exceptional structure and udder quality, tracing back to our highest selling bull to date, Tigershark
- Indexed 107 and 112 with a moderate birth weight of 80 lbs.
- 4 maternal sisters in production here plus 2 heifers in the replacement pen
- Maternal sister 409E is also a donor dam with a highlight South Point bull in the sale
- Offered as CHOICE with 839H – buyer has the option to choose 1/2 interest and 1/2 possession in both bulls OR 1/2 interest and full possession in one bull
- Call for more details

EPDS	
CE	4.0
BW	3.0
WW	53
YW	88
MCE	5.0
MM	23
STATS	
BW	80
AWW	785
AYW	1409
AOD	6
CES	★★



2

Wilbar Mayflower 751G - Maternal sister to Lot 1

Wilbar Mayflower 507B - Dam of Lot 1



# Choice Lot

2

WILBAR *Greenlight* 839H



05/02/2020  
WJD 839H  
2173433

BROOKING BANK NOTE 4040  
BROOKING REWIND 6023  
BROOKING MAUREEN EMILIE 350

SITZ TOP GAME 561X  
BALDCO EMULOTA 964  
JMB EMULOTA 013

- Greenlight is the replacement for his sire we have been seeking
- He is free moving and attractive on the move or at a stand
- His shape, structure and overall dimension are impressive to say the least
- Ranks in the Top 10% for VVW, Top 25% YW in the breed
- His dam was the \$62,000 top seller at the Trowbridge sale in 2016 and is a full sister to Select Sires bull JMB Traction
- Emulota is a beautiful, productive cow with a tremendous EPD profile and a current donor
- A full sister just calved, exhibiting exceptional udder quality and milking ability
- Full brother sold to Impact Ag Venture in 2020
- Offered as CHOICE with 835H – buyer has the option to choose 1/2 interest and 1/2 possession in both bulls OR 1/2 interest and full possession in one bull
- Call for more details

EPDS	
CE	3.5
BW	1.6
WW	62
YW	98
MCE	4.5
MM	26
STATS	
BW	97
AWW	837
AYW	1394
AOD	6
CES	★



Wilbar Mayflower 714G - Rewind daughter  
owned by Glen Gabel



Baldco Emulota 964 - Dam of Lot 2





EPDS	
CE	7.0
BW	2.7
WW	62
YW	103
MCE	8.0
MM	18
STATS	
BW	85
AWW	832
AYW	1348
AOD	7

24/01/2017  
**FIRE 5E**  
 1969967

S A V BISMARCK 5682  
**BAR-E-L NATURAL LAW 52Y**  
 BAR-E-L MAGNOLIA 143K

HF THUNDERBIRD 146Y  
**PM BLOSSOM 124'13**  
 POPLAR MEADOWS BLOSSOM 5'10

Highly regarded as one of the best sons of the famous Natural Law, Executive Decision has won our vote. He caught our attention as a yearling bull at Agribition where he was the stoutest, easiest fleshing bull that packed as much natural muscle into a moderate frame as we'd seen in some time. After securing the only semen sold that year we sampled him on a wide variety of cows and heifers including flushing both black and reds. The results have been monumental. He calves great on anything, they grow rapidly and filter to the top of both the bull and heifer pens. Females exhibit similar make and look to the Natural Law cattle but are possibly a little softer made. The Decision influence will be heavily used in our herd for years to come. They are the right kind.



EPDS	
CE	6.0
BW	0.7
WW	50
YW	74
MCE	9.0
MM	20
STATS	
BW	89
AWW	841
AYW	1366
AOD	7

08/01/2016  
**JSTN 23D**  
 1906212

CONNELLY EARNAN 076E  
**BROOKING BANK NOTE 4040**  
 E A ROSE 918

SITZ RIGHT ANSWER 506Y  
**BROOKING MAUREEN EMILIE 350**  
 SOO LINE MAUREEN EMILIE 0144

Rewind was our selection from Brooking a few years ago. He sired our high sellers for the past two years and his contribution to our cow herd is revealing itself to be exceptional. This year's offering of sons include some of his best ever, with a choice lot leading it off. But take note of his daughters that have done an outstanding job on their first calves in the other sire groups. They have exceptional udder quality, maintain body condition and breed back early.



**3****WILBAR *Right Decision* 812H**

EPDS	
CE	6.0
BW	2.3
WW	50
YW	94
MCE	9.0
MM	22
STATS	
BW	86
AWW	761
AYW	1393
AOD	9
CES	★★

21/01/2020  
**WJD 812H**  
 2173333

BAR-E-L NATURAL LAW 52Y  
**PM EXECUTIVE DECISION 5'17**  
 PM BLOSSOM 124'13

- Powerful herd bull material
- Good big foot, lots of hair and added depth
- Higher performing bull with a yearling index of 112
- Dam has a weaning ratio of 106/8

BAR-E-L UNFORGIVEN 102U  
**WILBAR MAYFLOWER 454Y**  
 WILBAR MAYFLOWER 731M

- Maternal brothers sold to Valley Lodge Angus, Harvest Angus, Flavel Gleann plus two daughters working here

**4****WILBAR *Distribution* 827H**

EPDS	
CE	1.0
BW	3.6
WW	43
YW	75
MCE	5.0
MM	23
STATS	
BW	97
AWW	702
AYW	1283
AOD	6
CES	*

26/01/2020  
**WJD 827H**  
 2173392

BAR-E-L NATURAL LAW 52Y  
**PM EXECUTIVE DECISION 5'17**  
 PM BLOSSOM 124'13

- Complete, well balanced and attractive
- Dam is a model Angus cow with a proven track record
- Maternal brothers were high selling, feature bulls to Dwajo Angus, Lost River Farming and Bench Farming Company

BAR-E-L UNFORGIVEN 102U  
**WILBAR ATALANTA 584B**  
 WILBAR ATALANTA 941U



5

WILBAR *Big Time* 818H



EPDS	
CE	2.0
BW	3.1
WW	54
YW	98
MCE	5.0
MM	20
STATS	
BW	89
AWW	785
AYW	1453
AOD	4
CES	★

23/01/2020  
WJD 818H  
2160280

BROOKING BANK NOTE 4040  
BROOKING REWIND 6023  
BROOKING MAUREEN EMILIE 350

O C C LEGACY 839L  
WILBAR LUCY 79D  
WILBAR LUCY 537B

- Huge middled, tanky and correct
- Impressive from every angle
- Big indexes at 106 and 122
- With a Legacy dam, his daughters should be exceptional

6

WILBAR *Aftermath* 846H



EPDS	
CE	2.5
BW	2.1
WW	46
YW	73
MCE	7.0
MM	19
STATS	
BW	80
AWW	699
AYW	1316
AOD	5
CES	★★

09/02/2020  
WJD 846H  
2160902

BROOKING BANK NOTE 4040  
BROOKING REWIND 6023  
BROOKING MAUREEN EMILIE 350

WILBAR CAPACITY 99Z  
WILBAR JENNIFER 807C  
WILBAR JENNIFER 431Y

- Ample muscle, smooth made, travels well
- Full sister was a \$10,000 high seller in the Keystone Klassic to Hidden Valley Speckle Park in Australia
- Twin

6



## 7 WILBAR *Progressive* 877H

02/03/2020 2160898 WJD 877H

BROOKING BANK NOTE 4040

**BROOKING REWIND 6023**

BROOKING MAUREEN EMILIE 350  
HF SMOKIN' ACES 105Y

**BAR-E-L BIRDIE 22B**

BAR-E-L BIRDIE 29Z

EPDS	CE	BW	WW	YW	MCE	MM
	0.0	2.9	47	73	5.0	19
STATS	BW	AWW	AYW	AOD	CES	
	95	745	1267	6	★	

- Attractive bull out of a productive, sound made cow
- Maternal brothers have sold to Lost River Farming, W2 Ranches and Dylan Roth



## 8 WILBAR *Rewind* 872H

28/02/2020 No Papers WJD 872H

BROOKING BANK NOTE 4040

**BROOKING REWIND 6023**

BROOKING MAUREEN EMILIE 350  
WILBAR CAPACITY 99Z

**WILBAR JENNIFER 767C**

WILBAR JENNIFER 319X

STATS	BW	WW	YW	AOD	CES
	65	718	1287	5	★★★

- Sells with no papers
- Moderate framed with lots of shape and dimension
- Proud, attractive look
- Dam produced only bulls with sons selling to Weedon Ranch, Craig Kinder and Clinton Holmes



## 9 WILBAR *Rendezvous* 882H

06/03/2020 2160900 WJD 882H

BROOKING BANK NOTE 4040

**BROOKING REWIND 6023**

BROOKING MAUREEN EMILIE 350  
BAR-E-L ALL STAR 7A

**WILBAR ANNIE K 49D**

SANDY BAR ANNIE K 50Z

EPDS	CE	BW	WW	YW	MCE	MM
	3.0	2.2	40	69	8.0	22
STATS	BW	AWW	AYW	AOD	CES	
	92	737	1264	4	★	

- Longer bodied, strong topped
- Reliable, maternally strong option for your cows
- Maternal brothers have sold to Perry Libke and Lost River Farming







EPDS	
CE	13.0
BW	0.5
WW	56
YW	96
MCE	10.0
MM	25
STATS	
BW	
AWW	
AYW	
AOD	10

13/03/2018  
**IMP 8362F**  
 2099027

PLATTEMERE WEIGH UP K360  
**STEVENSON TURNING POINT**  
 STEVENSON PRIDE I167X

SA V NET WORTH 4200  
**P R LADY 909 4200-587**  
 P R 587 205-537

With great anticipation we bring you the first sons in the world to sell on the International Champion, Conley South Point 8362. He excelled in the show ring, winning the two most prestigious cattle shows in North America. He was admired for his real world qualities, foot structure, fluid movement, dimension, thickness and presence. All this in a calving ease package. All of these traits are very evident in his first calf crop. Sons are attractive made with ideal skeletal structure and herd bull look. His daughters are favorites in our replacement pen. We feel that we've only seen the tip of the iceberg on what this bull will do.

**10**

WILBAR *Southwest* 857H



EPDS	
CE	7.0
BW	2.7
WW	58
YW	108
MCE	8.0
MM	25
STATS	
BW	85
AWW	813
AYW	1500
AOD	2
CES	*

19/02/2020  
**WJD 857H**  
 2160890

STEVENSON TURNING POINT  
**CONLEY SOUTH POINT 8362**  
 P R LADY 909 4200-587

SIX MILE CHALLENGER 417C  
**WILBAR LUCY 604F**  
 WILBAR LUCY 724C

- Soft and more ruggedly made, big topped, wide based South Point
- Highest performing in his sire group with indexes of 111 and 126
- An impressive 205 day weight of 813 lbs. out of a first calver
- All of this performance is backed by maternal strength as well



**11****WILBAR *South Side* 834H**

EPDS	
CE	5.0
BW	2.9
WW	49
YW	78
MCE	7.0
MM	23
STATS	
BW	83
AWW	756
AYW	1264
AOD	2
CES	★★

02/02/2020  
**WJD 834H**  
 2156549

STEVENSON TURNING POINT  
**CONLEY SOUTH POINT 8362**  
 P R LADY 909 4200-587

BROOKING REWIND 6023  
**WILBAR SUSIE 581F**  
 C-BAR SUSIE 726R

- He's got the look!
- Carries himself with the same character and presence of his sire, we believe he could have a future in the show ring if the buyer wishes
- His dam is a beautiful first calf heifer and maternal sister to 2015 high seller Back in Black to Duralta Farms

**12****WILBAR *Southbound* 849H**

EPDS	
CE	5.0
BW	2.4
WW	51
YW	87
MCE	5.0
MM	22
STATS	
BW	87
AWW	767
AYW	1324
AOD	10
CES	★

10/02/2020  
**WJD 849H**  
 2148287

STEVENSON TURNING POINT  
**CONLEY SOUTH POINT 8362**  
 P R LADY 909 4200-587

DUFF ENCORE 702  
**WILBAR PRINCESS 217X**  
 WILBAR PRINCESS 703M

- High performing South Point, above average indexes
- Especially impressive look on the profile
- Picture perfect donor dam
- Maternal sisters at Arntzen Angus, Lazy MC and here, maternal brothers at Spring Coulee and Lost River



**13****WILBAR *Snapback* 844H**

EPDS	
CE	6.0
BW	2.6
WW	47
YW	84
MCE	6.0
MM	24
STATS	
BW	87
AWW	740
AYW	1332
AOD	3
CES	★★

08/02/2020  
**WJD 844H**  
 2160284

STEVENSON TURNING POINT  
**CONLEY SOUTH POINT 8362**  
 P R LADY 909 4200-587

WILBAR FOUNDATION 735C  
**WILBAR SUSIE 429E**  
 C-BAR SUSIE 726R

- A stylish South Point with a little added frame
- Smooth shouldered, lots of hair, up headed
- Dam is a maternal sister to past high seller, Back in Black

**14****WILBAR *Nitro* 875H**

EPDS	
CE	6.0
BW	2.9
WW	55
YW	94
MCE	7.0
MM	26
STATS	
BW	89
AWW	782
AYW	1322
AOD	3
CES	★★

01/03/2020  
**WJDO 875H**  
 2148293

STEVENSON TURNING POINT  
**CONLEY SOUTH POINT 8362**  
 P R LADY 909 4200-587

PLEASANT VALLEY LUTE 1207  
**WILBAR MAYFLOWER 409E**  
 WILBAR MAYFLOWER 507B

- Big topped, stylish, good footed
- Above average growth, ranking in the top 25% of the breed for both WW and YW
- Dam is a maternal sister to Lot 1 and current donor with exceptional phenotype, udder quality and structure
- Maternal brother is a herd sire in our outcross program





EPDS	
CE	9.0
BW	1.3
WW	46
YW	83
MCE	9.0
MM	25
STATS	
BW	77
AWW	755
AYW	1345
AOD	2
CES	***

01/03/2020  
WJDK 874H  
2148294

STEVENSON TURNING POINT  
CONLEY SOUTH POINT 8362  
P R LADY 909 4200-587

MUSGRAVE SKY HIGH 1535  
WILBAR JENNIFER 562F  
WILBAR JENNIFER 221R

- Long spined, good footed with an attractive profile
- Dam is super broody with excellent foot structure and was Kylie's 2019 show heifer
- Exhibits the overall style and correctness of his sire



16 WILBAR *South Point* 852H

15/02/2020 2148292 WJDO 852H  
STEVENSON TURNING POINT  
CONLEY SOUTH POINT 8362  
P R LADY 909 4200-587  
S A V BISMARCK 5682  
PM PRIDE 60'18  
HF PRIDE 295W

EPDS	CE	BW	WW	YW	MCE	MM
	16.0	-2.2	40	65	13.0	25
STATS	BW	AWW	AYW	AOD	CES	
	63	696	1171	2	***	

- Very smooth made heifer bull
- Ranks in the top 1% of the breed for birth weight and calving ease
- Dam is a gorgeous Bismarck daughter that was shown by Owen

17 WILBAR *Deluxe* 871H

28/02/2020 2160897 WJD 871H  
CONNEALY COUNTDOWN  
FF COUNTDOWN D9  
FF FANTASY B38  
BROOKING BANK NOTE 4040  
BROOKING MAUREEN EMILIE 7087  
BAX MAUREEN EMILIE 243-559

EPDS	CE	BW	WW	YW	MCE	MM
	14.0	-0.7	48	85	14.0	24
STATS	BW	AWW	AYW	AOD	CES	
	66	736	1315	3	***	

- Rest easy heifer bull
- Low birth, calving ease bull with indexes of 101 and 106
- Top 1% calving ease, top 5% birth weight, top 3% maternal calving ease
- Maternal brother sold to Riverview Farming





## 18 WILBAR *Limelight* 840H

05/02/2020 2160283 WJD 840H

CONNEALY COUNTDOWN

FF COUNTDOWN D9

FF FANTASY B38

WILBAR TIGERSHARK 420Y

WILBAR ATALANTA 6D

WILBAR ATALANTA 584B

EPDS	CE	BW	WW	YW	MCE	MM
	9.0	0.6	54	94	10.0	31
STATS	BW	AWW	AYW	AOD	CES	
	85	808	1488	4	★★	

- Soggy and exceptionally deep bodied
- Big hiped, big topped and up headed
- His is the third time his mother has been mated to Countdown with full brothers selling to 4C Farms (the Chibris) and Steve Doig
- Maternal granddam is the dam of Lot 4



## 19 WILBAR *Lift Off* 869H

27/02/2020 2160896 WJD 869H

CONNEALY COUNTDOWN

FF COUNTDOWN D9

FF FANTASY B38

PM AVIATOR 19'14

WILBAR JENNIFER 151D

WILBAR JENNIFER 614B

EPDS	CE	BW	WW	YW	MCE	MM
	9.0	0.2	48	89	13.0	27
STATS	BW	AWW	AYW	AOD	CES	
	80	786	1379	4	★★★	

- Ranks in the top 10% for calving ease and birth weight and top 3% for maternal calving ease
- Sure fire heifer bull with extra look
- Dam is held in high regard for phenotype and production
- Maternal brother sells as Lot 58



## 20 WILBAR *Challenger* 868H

26/02/2020 2160895 WJD 868H

CONNEALY COMPLETE 8454

SIX MILE CHALLENGER 417C

SIX MILE QUEEN MOTHER 849U

PLEASANT VALLEY LUTE 1207

WILBAR JENNIFER 414E

WILBAR JENNIFER 223A

EPDS	CE	BW	WW	YW	MCE	MM
	3.0	2.3	39	69	7.0	24
STATS	BW	AWW	AYW	AOD	CES	
	87	738	1329	3	★★	

- Converted well with a yearling index of 108
- Smooth made, multi-purpose bull backed by maternal strength



## 21 WILBAR *Satisfaction* 865H

25/02/2020 2160893 **WJD 865H**

CONNEALY COMPLETE 8454

SIX MILE CHALLENGER 417C  
SIX MILE QUEEN MOTHER 849U  
PLEASANT VALLEY LUTE 1207

WILBAR LUCY 401E  
WILBAR LUCY 537B

EPDS	CE	BW	WW	YW	MCE	MM
	3.0	2.3	45	82	5.0	24
STATS	BW	AWW	AYW	AOD	CES	
	93	762	1372	3	★	

- A pen favourite out of a flush worthy Lute daughter
- Body and shape of a herd bull candidate
- High performance Challenger with a yearling index of 112
- Will sire exceptional females and stout sons



## 22 WILBAR *Challenger* 830H

29/01/2020 2160282 **WJD 830H**

CONNEALY COMPLETE 8454

SIX MILE CHALLENGER 417C  
SIX MILE QUEEN MOTHER 849U  
WILBAR CONTENDER 531B

WILBAR ANNIE K 468E  
WILBAR ANNIE K 902U

EPDS	CE	BW	WW	YW	MCE	MM
	1.0	2.5	28	52	5.0	29
STATS	BW	AWW	AYW	AOD	CES	
	86	700	1250	3	★★	

- Stout made, lots of muscle expression
- Easy fleshing and soft made
- Maternal brother sold to Griffin Ranch



## 23 WILBAR *Challenger* 862H

21/02/2020 2160892 **WJD 862H**

CONNEALY COMPLETE 8454

SIX MILE CHALLENGER 417C  
SIX MILE QUEEN MOTHER 849U  
WILBAR CONTENDER 531B

WILBAR OAKLEAF 585F  
WILBAR OAKLEAF 781C

EPDS	CE	BW	WW	YW	MCE	MM
	-1.0	3.7	33	61	5.0	26
STATS	BW	AWW	AYW	AOD	CES	
	82	703	1265	2	★★	

- A good candidate for larger heifers
- Attractive with lots of hair
- Same cow family that produced a \$20,000 high selling heifer in the 2020 Angus Collection to Hidden Valley and Notta Ranch





24

WILBAR *Lottery* 800H



EPDS	
CE	-4.0
BW	4.0
WW	45
YW	82
MCE	5.0
MM	22
STATS	
BW	83
AWW	720
AYW	1301
AOD	2
CES	★

10/01/2020  
WJD 800H  
2160887

KR CASH FLOW  
BCC LOTTO MAX 31F  
BCC BLACK VELVET 7S

BCC FIRE IT UP 2B  
BCC BLACK VELVET 134F  
BCC BLACK VELVET 107C

- Extremely big topped and wide based
- Will add dimension and hip shape
- Dam is a nice two year from Brandl Cattle Company

25

WILBAR *Outsider* 678H



EPDS	
CE	7.0
BW	-0.3
WW	31
YW	64
MCE	8.0
MM	23
STATS	
BW	68
AWW	710
AYW	1335
AOD	3
CES	★★★

21/02/2020  
WJDK 678H  
2160293

TC OUTSIDER 101B  
WILBAR OUTSIDER 15F  
WILBAR CORA 56D

RED WILBAR SPEED 32A  
RED WILBAR BAYBERRY 225E  
RED WILBAR BAYBERRY 694S

- Backed with tons of maternal calving ease and strength
- Very attractive, extra dimension, big topped
- Dam also has a favourite first calver by Element

- Indexed 114 at yearling weight
- Red Carrier



## 26 WILBAR *Outsider* 699H

01/03/2020 2160290 **WJD 699H**

TC OUTSIDER 101B

WILBAR OUTSIDER 15F

WILBAR CORA 56D

RED WILBAR TORNADO 385X

RED WILBAR BLOCKANA 14A

RED BAR-E-L CHERRY 94P

EPDS	CE	BW	WW	YW	MCE	MM
	-1.0	3.3	40	82	5.0	25

STATS	BW	AWW	AYW	AOD	CES
	91	825	1455	7	★

- Higher performing bull with indexes of 112 and 114
- Big topped, deep sided and long bodied
- Maternal brothers at Hillcrest Farming and Auvergne Wise Pasture, maternal sister at U2 Ranch
- Red carrier



## 27 WILBAR *Outsider* 665H

13/02/2020 2147989 **WJDK 665H**

TC OUTSIDER 101B

WILBAR OUTSIDER 15F

WILBAR CORA 56D

WILBAR EASTWOOD 200X

WILBAR SCAARA 869Z

RED WILBAR SCAARA 539R

EPDS	CE	BW	WW	YW	MCE	MM
	-1.0	3.5	37	79	5.0	23

STATS	BW	AWW	AYW	AOD	CES
	92	756	1351	8	★

- Extra length and rib shape,
- Above average performance with W1 101 and Y1 109
- Dam is a donor with extra mass and udder quality
- Sire was used in our outcross program until his untimely death
- Homozygous black



## 28 WILBAR *Variety* 675H

19/02/2020 2159958 **WJD 675H**

TC OUTSIDER 101B

WILBAR OUTSIDER 15F

WILBAR CORA 56D

RED DIAMOND T HIPS STOUT 107U

RED WILBAR RUBY 810Z

RED WILBAR RUBY 303X

EPDS	CE	BW	WW	YW	MCE	MM
	-2.0	3.3	43	74	1.0	27

STATS	BW	AWW	AYW	AOD	CES
	96	827	1382	8	★

- Long sided, outcross pedigree
- Dam is CAA Elite with sons sold to Chris Nidesh and Rock Point Angus and daughters to Six Mile and Cleavelands Farm
- Indexed 112 at weaning
- Red carrier





# Choice Lot

29

RED WILBAR *Highlight* 624H



26/01/2020  
WJD 624H  
2154597

RRA AVIATOR 507  
RED NCJ COMING IN HOT 24E  
RED NCJ MINERVA 35C

RED WILBAR SPEED 32A  
RED WILBAR DOLL 776C  
RED LAZY MC DOLL 25R

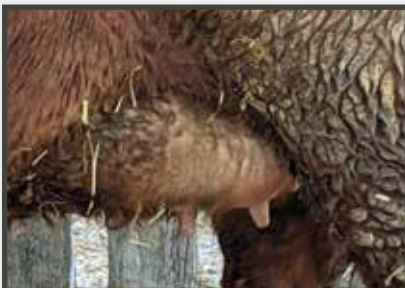
- Massively made in every way
- Extra bone and strong foot structure
- Ranks in the top 10% of the breed for VVW and top 5% for YW
- Exceptional growth combined with maternal calving ease and moderate birth weight
- Maternal brother working at Matt Olson's and two maternal sisters in our herd (one with a highlight Motivate son as Lot 52)
- Offered as CHOICE with 625H – buyer has the option to choose 1/2 interest and 1/2 possession in both bulls OR 1/2 interest and full possession in one bull
- Call for more details

## BOLT EPDS

CE	11
BW	-0.8
WW	66
YW	117
MCE	7.3
MM	27

## STATS

BW	83
AWW	804
AYW	1462
AOD	5
CES	★★



Quality udder on maternal sister to Lot 29



2020 High Selling Bull out of maternal sister to Lot 29



Red Wilbar Blockana 653H, paternal sister to Lot 29



# Choice Lot

30

RED WILBAR *Tempo* 625H



26/01/2020  
WJD 625H  
2154599

RED PIE SPECIALIST 430  
RED WILBAR CRACKERJACK 73F  
RED WILBAR SUE 51A

- Well balanced and very complete
- Long bodied, deep sided, soft made and stylish
- Dark cherry red with an exceptional hair coat
- Maternal brother to 2018 Reserve National Champion Bull, Wilbar Lithium 56F
- Son of \$21,000 2019 High Seller to Yarrow Creek Ranch
- Dam is a very youthful, consistent producer with a very nice udder and great feet
- Maternal sister at Deep Lake Land and Cattle
- Offered as CHOICE with 624H – buyer has the option to choose 1/2 interest and 1/2 possession in both bulls OR 1/2 interest and full possession in one bull
- Call for more details

RED TER-RON RELOAD 703T  
RED WILBAR REBECCA 858Z  
RED WILBAR REBECCA 44U



Red Wilbar Lithium 56F, maternal brother to Lot 30, 2019 sale feature to Raymond Cattle Co. and 2018 Reserve National Champion Red Angus Bull



Dam of Lot 30, Red Wilbar Rebecca 858Z, on pasture

## BOLT EPDS

CE	11.3
BW	-1.4
WW	60
YW	91
MCE	7.1
MM	19

## STATS

BW	86
AWW	733
AYW	1301
AOD	8
CES	★★





BOLT EPDS	
CE	9.4
BW	0
WW	71
YW	122
MCE	8.1
MM	24
STATS	
BW	75
AWW	793
AYW	1265
AOD	5

31/01/2017  
XDS 24E  
1987684

MUSGRAVE AVIATOR  
RRA AVIATOR 507  
RED RRA RACHEL 246 746

RED NCJ LAZY MC VENOM 34Z  
RED NCJ MINERVA 35C  
RED NCJ MINERVA 13S

The decision to use CIH was one we look back on and regret only that we didn't breed more cows to him. Sired by a grandson of the popular and successful black bull Musgrave Aviator, CIH offers so much in terms of versatility to our herd. They are born with moderate birth weights and never look back. His progeny exhibit true curve-bending growth. Both sons and daughters are massive ribbed with incredible dimension and ultra cool look. Last fall, CIH was responsible for the \$11,500 high selling red female, Red Wilbar Lana 615H to Bar Double M Ranch and Lloydminister Stockade Show Intermediate Champion Heifer Calf, Red Wilbar Blockana 653H. We can't wait to show you the sons!



BOLT EPDS	
CE	16
BW	-5.2
WW	59
YW	89
MCE	10.3
MM	27
STATS	
BW	81
AWW	738
AYW	1208
AOD	7

17/02/2018  
WJD 73F  
2060871

RED LSF SAGA 1040Y  
RED PIE SPECIALIST 430  
RED PIE PLAYMATE 232

RED BAR-E-L DOUBLE DEUCE 198Y  
RED WILBAR SUE 51A  
RED WILBAR SUE 3U

Crackerjack was our 2019 high seller at \$21,000 to Yarrow Creek Angus, AB. While we loved the Specialist progeny for the moderate birth weight, calving ease and maternal strength, Crackerjack adds more performance, bone and overall structure to an already heifer safe pedigree. His calves are extremely long bodied with an abundance of dark hair. The dam, 51A consistently has calves with moderate birth weights and above average growth no matter how she's bred. Overall BALANCE would sum up Crackerjack sons best, we think you'll like them.



31

RED WILBAR *Reckless* 649H



BOLT EPDS	
CE	9.2
BW	1.4
WW	68
YW	118
MCE	6.4
MM	22
STATS	
BW	88
AWW	793
AYW	1450
AOD	2
CES	★

03/02/2020  
WJDK 649H  
2162419

RRA AVIATOR 507  
RED NCJ COMING IN HOT 24E  
RED NCJ MINERVA 35C

RED LAZY MC JACK 119C  
WILBAR SCAARA 83F  
WILBAR SCAARA 869Z

- Possibly the stoutest bull in the pen
- Tons of mass and muscle packed into a moderate, correct frame
- Weaning index of 108 and Yearling index of 120
- Dam is a top Jack daughter who did an incredible job on her first calf

32

RED WILBAR *Fire Away* 655H



BOLT EPDS	
CE	10.2
BW	-0.7
WW	53
YW	84
MCE	7.8
MM	20
STATS	
BW	86
AWW	713
AYW	1220
AOD	9
CES	★★

07/02/2020  
WJD 655H  
2161662

RRA AVIATOR 507  
RED NCJ COMING IN HOT 24E  
RED NCJ MINERVA 35C

RED WILBAR REPLICA 836T  
RED WILBAR BRNDINA 617Y  
RED WILBAR BRNDINA 638S

- Despite losing his recipient dam early in life, this guy has progressed to being a feature bull
- Very stylish, balanced with extra scrotal
- Dam is a feature donor cow out of the highly esteemed Brndina family





### 33 RED WILBAR *Heat* 631H

28/01/2020 2173449 WJD 631H

RRA AVIATOR 507  
 RED NCJ COMING IN HOT 24E  
 RED NCJ MINERVA 35C  
 RED TER-RON TORNADO 157M  
 RED WILBAR BLOCKANA 357X  
 RED WILBAR BLOCKANA 677S

BOLT EPDS	CE	BW	WW	YW	MCE	MM
	9.7	-0.5	57	96	7.2	23
STATS	BW	AWW	AYW	AOD	CES	
	71	676	1192	10	***	

- Dam is a highly regarded and top producing donor
- Very smooth made, will remain moderate for use on heifers over multiple years
- Maternal sister was a highlight in 2020 Red Roundup, selling to Kamrie Kaufmann of SVR
- Flushmate is Kylie's current 4-H heifer and was Division Champion at 2020 Stockade Roundup



### 34 RED WILBAR *Incoming* 659H

09/02/2020 2173441 WJD 659H

RRA AVIATOR 507  
 RED NCJ COMING IN HOT 24E  
 RED NCJ MINERVA 35C  
 RED TER-RON TORNADO 157M  
 RED WILBAR BLOCKANA 357X  
 RED WILBAR BLOCKANA 677S

BOLT EPDS	CE	BW	WW	YW	MCE	MM
	9.7	-0.5	57	96	7.2	23
STATS	BW	AWW	AYW	AOD	CES	
	74	719	1269	10	***	

- Dam is a highly regarded and top producing donor
- Very smooth made, will remain moderate for use on heifers over multiple years
- Maternal sister was a highlight in 2020 Red Roundup, selling to Kamrie Kaufmann of SVR
- Flushmate is Kylie's current 4-H heifer and was Division Champion at 2020 Stockade Roundup



### 35 RED WILBAR *Smokin Hot* 627H

27/01/2020 2154603 WJD 627H

RRA AVIATOR 507  
 RED NCJ COMING IN HOT 24E  
 RED NCJ MINERVA 35C  
 WILBAR SERENGETTI 92A  
 WILBAR HANA 813C  
 RED WILBAR HANA 402P

BOLT EPDS	CE	BW	WW	YW	MCE	MM
	11.4	-1.5	61	99	8.2	23
STATS	BW	AWW	AYW	AOD	CES	
	78	785	1282	5	***	

- Long sided, dark red
- Low birth option with higher growth, ranks in the top 6% of breed for YW
- Smooth made, multi-purpose bull



**36****RED WILBAR *Convenience* 626H**

BOLT EPDS	
CE	12.6
BW	-1.9
WW	55
YW	84
MCE	8
MM	24
STATS	
BW	89
AWW	712
AYW	1237
AOD	6
CES	***

26/01/2020  
**WJD 626H**  
 2154601

RED PIE SPECIALIST 430  
**RED WILBAR CRACKERJACK 73F**  
 RED WILBAR SUE 51A

RED WILBAR OVER THE TOP 825Z  
**RED WILBAR SOXRO 396B**  
 RED WILBAR SOXRO 635Y

- Extremely long sided and smooth made
- Exhibits the hairiness and extra scrotal typical of the Crackerjacks
- Excellent heifer bull candidate
- Maternal brothers have sold to Impact Ag Ventures and Merv Hutt and one sister to Hillcrest Farming

**37****RED WILBAR *Specialist* 607H**

BOLT EPDS	
CE	13.2
BW	-3
WW	53
YW	78
MCE	7.5
MM	18
STATS	
BW	79
AWW	721
AYW	1213
AOD	10
CES	**

19/01/2020  
**WJD 607H**  
 2147084

RED PIE SPECIALIST 430  
**RED WILBAR CRACKERJACK 73F**  
 RED WILBAR SUE 51A

RED TER-RON RELOAD 703T  
**RED WILBAR LANA 313X**  
 RED WILBAR LANA 346N

- Added hair and length of body
- Dam is a full sister to RBC Supreme Champion Wilbar Longitude
- Light birth weight calving ease candidate
- Brothers have sold to Ellis Edge, Hillcrest Farming and a sister to Henry Stewart





BOLT EPDS	
CE	10.1
BW	-1
WW	67
YW	108
MCE	5.2
MM	17
STATS	
BW	88
AWW	778
AYW	1297
AOD	8

11/02/2018  
WJD 56F  
2060683

DKF ELIMINATOR 15A  
RED DKF RAZOR 55C  
DKF MISS NET WORTH 21A

RED TER-RON RELOAD 703T  
RED WILBAR REBECCA 858Z  
RED WILBAR REBECCA 44U

Lithium was the 2018 Reserve National Champion Bull and sold to Raymond Land and Cattle, SK the following spring. Lithium sires dark red calves with wide tops, big hips and attractive fronts that command attention. They are the first calves that get noticed in the pasture for their eye catching design. Lithium's dam is a moderate framed, ideal uddered Reload daughter that looks and produces like she's four years younger than she really is. We feel the daughters are going to be pretty special and prove to be great looking, functional cattle. One was featured last fall at the prestigious Red Round Up sale selling to Kamrie Kaufman of South View Ranch. Look for her at the front of the class in the \$100,000 Futurity this fall.



BOLT EPDS	
CE	13.1
BW	-3.4
WW	48
YW	78
MCE	7.4
MM	19
STATS	
BW	70
AWW	687
AYW	1203
AOD	6
CES	***

20/01/2020  
WJD 608H  
2147104

RED DKF RAZOR 55C  
RED WILBAR LITHIUM 56F  
RED WILBAR REBECCA 858Z

RED LAZY MC REDMAN 63X  
RED WILBAR ANGIE 344B  
RED BWB ANGIE 66'01 OF DESIGN

- Pasture standout all summer
- Exceptionally stylish and stout
- Dam is a beautiful cow with a gorgeous udder
- Maternal brothers have sold to Norheim Ranching and a daughter to Sam Dyck



## 39 RED WILBAR *Applause* 614H

21/01/2020 2154576 WJD 614H

RED DKF RAZOR 55C

RED WILBAR LITHIUM 56F

RED WILBAR REBECCA 858Z

RED HOWE FINEST TRADITION 20W

RED WILBAR CHEROVIAN 890Z

RED WILBAR CHEROVIAN 640S

BOLT EPDS	CE	BW	WW	YW	MCE	MM
	14.9	-4	54	83	8.3	18
STATS	BW	AWW	AYW	AOD	CES	
	72	716	1246	8	★★	

- Massively made and dark red with a herd bull presence
- Dam is big bodied cow with a perfect udder and is a past donor
- Maternal brothers have sold to B-Elle Red Angus, Bridgeway Red Angus



## 40 RED WILBAR *Treasure Chest* 639H

31/01/2020 2159946 WJD 639H

RED DKF RAZOR 55C

RED WILBAR LITHIUM 56F

RED WILBAR REBECCA 858Z

RED PIE SPECIALIST 430

RED WILBAR FIREFLY 101F

RED WILBAR FIREFLY 369B

BOLT EPDS	CE	BW	WW	YW	MCE	MM
	12.4	-2.7	61	97	7	24
STATS	BW	AWW	AYW	AOD	CES	
	63	791	1315	2	★★★	

- Indexed III at weaning
- Dam is a highly productive, beautifully bodied cow
- Surefire heifer bull with added shape



## 41 RED WILBAR *Lithium* 633H

28/01/2020 2154623 WJD 633H

RED DKF RAZOR 55C

RED WILBAR LITHIUM 56F

RED WILBAR REBECCA 858Z

RED PIE SPECIALIST 430

RED WILBAR SOXRO 3F

RED WILBAR SOXRO 48D

BOLT EPDS	CE	BW	WW	YW	MCE	MM
	14.5	-4.7	58	92	7.9	25
STATS	BW	AWW	AYW	AOD	CES	
	63	776	1295	2	★★★	

- Heifer bull deluxe
- Out of a highly productive Specialist dam, the cross with Lithium really clicked
- Calving ease combined with dimension and hair







BOLT EPDS	
CE	15.6
BW	-6
WW	54
YW	104
MCE	11.2
MM	36

02/03/2016  
**IMP 6305D**  
 2017139

SPUR FRANCHISE 7070  
**SPUR FRANCHISE OF GARTON**  
 H&H IRENE LASS 0135

RED TR COLT 45 UT806  
**RED C-BAR ABIGRACE Y11**  
 RED C-BAR & BROWN ABIGRACET714

This is the final group of sons on offer out of Franchise. He is the \$101,000 high selling bull for 9 Mile Ranch in Oregon and offers some different genetics to our Red customers. The sons are exceptionally long sided and smooth made. While not ultra low birth, he certainly adds calving ease, and his daughters appear to have milky, correct udders with functional, attractive structure. The Franchise sons also exhibit excellent foot structure.



BOLT EPDS	
CE	14.7
BW	-2.6
WW	61
YW	98
MCE	10.2
MM	29
STATS	
BW	90
AWW	775
AYW	1275
AOD	8
CES	*

23/01/2020  
**WJD 620H**  
 2154581

SPUR FRANCHISE OF GARTON  
**RED 9 MILE FRANCHISE 6305**  
 RED C-BAR ABIGRACE Y11

RED PASQUIA TOAST 15W  
**RED WRAZ DORITA 94Z**  
 RED WRAZ DORITA 13U

- Added stretch and growth
- Very correct in his make up
- Dam is a top producing past donor and CAA Elite Premier Dam
- Maternal brothers at Matejka Ranch, Auverge Wise Pasture, Ellis Edge, Mike Deneiko, Summit Creek Ranch and several daughters working here



**43****RED WILBAR *New Age* 612H**

BOLT EPDS	
CE	10.1
BW	-1
WW	57
YW	97
MCE	8.1
MM	27
STATS	
BW	92
AWW	770
AYW	1300
AOD	6
CES	★

21/01/2020  
**WJD 612H**  
 2154572

SPUR FRANCHISE OF GARTON  
**RED 9 MILE FRANCHISE 6305**  
 RED C-BAR ABIGRACE Y11

RED PIE GAME ON 9109  
**RED WILBAR BRNDINA 315B**  
 RED WILBAR BRNDINA 617Y

- Very eye catching and complete, a visitor favourite all summer
- Big topped, good dark feet, softest made Franchise
- Backed by the renowned Brndina cow family
- Maternal brother sold to Mitchell Wall

**44****RED WILBAR *Franchise* 604H**

BOLT EPDS	
CE	15.5
BW	-5.2
WW	49
YW	82
MCE	11.2
MM	28
STATS	
BW	66
AWW	702
AYW	1175
AOD	7
CES	★★★

19/01/2020  
**WJD 604H**  
 2147070

SPUR FRANCHISE OF GARTON  
**RED 9 MILE FRANCHISE 6305**  
 RED C-BAR ABIGRACE Y11

RED BAR-E-L DOUBLE DEUCE 198Y  
**RED WILBAR SUE 51A**  
 RED WILBAR SUE 3U

- Maternal brother to the \$21,000 Crackerjack (sold to Yarrow Creek Ranch)
- Extra length, smooth shouldered and nice headed
- Heifer bull extraordinaire combined with maternal ability
- Maternal brothers also at Libke Ranch, AuvergneWise Pasture and a sister at Bloom Red Angus





## 45 RED WILBAR *Regenerate* 637H

31/01/2020 2154630 WJD 637H

SPUR FRANCHISE OF GARTON

RED 9 MILE FRANCHISE 6305

RED C-BAR ABIGRACE Y11

RED BAR-E-L DOUBLE DEUCE 198Y

RED WILBAR LANA 819C

RED WILBAR LANA 313X

BOLT EPDS	CE	BW	WW	YW	MCE	MM
	11.9	-2.1	58	99	8.3	26
STATS	BW	AWW	AYW	AOD	CES	
	85	771	1326	5	★★	

- Another long, smooth Franchise son
- Balanced performance and maternal strength



## 46 RED WILBAR *Franchise* 600H

15/01/2020 2147051 WJD 600H

SPUR FRANCHISE OF GARTON

RED 9 MILE FRANCHISE 6305

RED C-BAR ABIGRACE Y11

RED BLAIRS RELOAD 218Y

RED MAPLE RIDGE ACRE LANEY 1D

RED MRAS LANEY 3R

BOLT EPDS	CE	BW	WW	YW	MCE	MM
	12.1	-3.3	54	95	6.7	32
STATS	BW	AWW	AYW	AOD	CES	
	77	792	1350	4	★★★	

- Calving ease bull
- Above average growth indexes
- Large scrotalled and good footed



Red Wilbar Brndina 53F

2020 Angus Miss North America and flush mate to Lot 47 (WJD 635H); owned with Sunberry Valley Ranch



Red Wilbar Element 220E

2018 High Seller to Jay Bar Dee, on pasture summer of 2019; flushmate to Lot 47 (WJD 635H)



47

RED WILBAR *Helix* 635H



BOLT EPDS	
CE	15.5
BW	-5.1
WW	49
YW	79
MCE	8.5
MM	24
STATS	
BW	60
AWW	701
AYW	1286
AOD	14
CES	***

29/01/2020  
WJD 635H  
2173321

RED LSF SAGA 1040Y  
RED PIE SPECIALIST 430  
RED PIE PLAYMATE 232

RED TER-RON TORNADO 157M  
RED WILBAR BRNDINA 638S  
RED LAZY MC BRNDINA 15E

- Sale FEATURE
- Impressive presence, structure and character
- Flushmate to \$16,000 Element 220E, 2018 high seller to Jay Bar Dee
- Dam's production record includes a Reserve National Champion Bull, multiple herd sires for top commercial and purebred breeders and numerous daughters and granddaughters in production here

48

RED WILBAR *Jack* 685H



BOLT EPDS	
CE	6.9
BW	2.6
WW	66
YW	113
MCE	2.2
MM	23
STATS	
BW	105
AWW	841
AYW	1525
AOD	6
CES	*

24/02/2020  
WJD 685H  
2160199

RED TER-RON PARKER 34A  
RED LAZY MC JACK 119C  
RED LAZY MC FIREFLY 4Y

RED LAZY MC REDMAN 63X  
RED WILBAR ANGIE 351B  
RED WILBAR ANGIE 66U

- Power and performance bull with indexes of 112 at WW and 125 at YW
- Will add punch to your cows and added frame to get it done
- Excellent foot and added bone
- Maternal brothers at Meridian Agriculture and Auvergne Wise Pasture, sister sold to Madeline Ethington in Kentucky





BOLT EPDS	
CE	15.5
BW	-3.7
WW	32
YW	50
MCE	7.9
MM	24
STATS	
BW	71
AWW	640
AYW	1198
AOD	6

04/02/2017  
KTH 57E  
1999563

SOO LINE MOTIVE 9016  
TER-RON MOTIVATOR 4B  
RED TER-RON GOLDIE 240P

RED TWIN HERITAGE SOLDIER 41Z  
RED TWIN HERITAGE CHER 3B  
RED TWIN HERITAGE CHER 28Z

Motivate was selected a few years ago for his interesting outcross pedigree, superior foot structure and udder quality of his dam and her paternal sisters. As his first daughters are now calving, the final test of this young sire is nearly complete and we are extremely pleased with the results. His sons offer low birth and calving ease with above average style and hair. His daughters rank as favourites in the group of first calvers, with one being a \$11,000 high seller at the Keystone Klassic to Bar Double M Ranch (Lethbridge). This group of sons offer eye appeal, excellent feet, extra hair and enough performance to work on your cows or heifers.



BOLT EPDS	
CE	14.1
BW	-2.5
WW	45
YW	76
MCE	7.9
MM	27
STATS	
BW	78
AWW	779
AYW	1322
AOD	3
CES	***

25/02/2020  
WJD 686H  
2160200

TER-RON MOTIVATOR 4B  
RED TWIN HERITAGE MOTIVATE 57E  
RED TWIN HERITAGE CHER 3B

RED LAURON COLTON 24C  
RED WILBAR DOLL 266E  
RED WILBAR DOLL 776C

- Sale feature
- Exceptionally complete and correct in his make up
- Excellent foot and leg structure, added hair

- Maternal brother was 2020 high selling red bull to Rivers Edge Cattle Company
- Balanced EPD and performance in a very attractive package



50

RED WILBAR *Motivate* 636H



BOLT EPDS	
CE	15.9
BW	-4.2
WW	36
YW	53
MCE	8.2
MM	26
STATS	
BW	68
AWW	729
AYW	1221
AOD	3
CES	***

30/01/2020  
WJD 636H  
2154626

TER-RON MOTIVATOR 4B  
RED TWIN HERITAGE MOTIVATE 57E  
RED TWIN HERITAGE CHER 3B

RED LAZY MC JACK 119C  
RED WILBAR SOXRO 295E  
RED WILBAR SOXRO 106U

- Dark red, good haired, soft made
- Shares his sire's good foot structure and overall look
- Full brother sold to Strate Lake Side Farm in 2020

51

RED WILBAR *Motivate* 661H



BOLT EPDS	
CE	14.7
BW	-2.8
WW	43
YW	73
MCE	7.9
MM	25
STATS	
BW	81
AWW	727
AYW	1287
AOD	4
CES	**

11/02/2020  
WJD 661H  
2159951

TER-RON MOTIVATOR 4B  
RED TWIN HERITAGE MOTIVATE 57E  
RED TWIN HERITAGE CHER 3B

RED WILBAR SPEED 32A  
RED WILBAR SOXRO 22D  
RED WILBAR SOXRO 635Y

- Extra rib shape and depth
- Dam and granddam are gorgeous, big bodied and productive
- Eye catching bull with lots of appeal





## 52 RED WILBAR *Overdrive* 657H

08/02/2020 2159949 WJD 657H

TER-RON MOTIVATOR 4B  
 RED TWIN HERITAGE MOTIVATE 57E  
 RED TWIN HERITAGE CHER 3B  
 RED LAURON COLTON 24C  
 RED WILBAR DOLL 266E  
 RED WILBAR DOLL 776C

BOLT EPDS	CE	BW	WW	YW	MCE	MM
	13.1	-1.6	50	78	7.6	24
STATS	BW	AWW	AYW	AOD	CES	
	82	734	1315	3	★★	

- Higher performing Motivate out of the renowned Cora family
- Stout and deep sided
- Top option for younger cows or larger heifers
- Indexed 106 for yearling weight



## 53 RED WILBAR *Collective* 676H

20/02/2020 2160195 WJD 676H

TER-RON MOTIVATOR 4B  
 RED TWIN HERITAGE MOTIVATE 57E  
 RED TWIN HERITAGE CHER 3B  
 RED SIX MILE OFF TOPIC 73Z  
 RED WILBAR FIREFLY 369B  
 RED WILBAR FIREFLY 863Z

BOLT EPDS	CE	BW	WW	YW	MCE	MM
	11.8	-0.6	41	59	7	24
STATS	BW	AWW	AYW	AOD	CES	
	84	764	1163	6	★★	

- Moderate and stout made
- Heifer bull prospect
- Big bodied dam with great udder
- Maternal brothers have sold to Mark Thoen and Erixon Simmentals
- Maternal sister sold to Lexie Mathon, AB



## 54 RED WILBAR *Ransom* 652H

05/02/2020 2159948 WJD 652H

TER-RON MOTIVATOR 4B  
 RED TWIN HERITAGE MOTIVATE 57E  
 RED TWIN HERITAGE CHER 3B  
 RED LAZY MC JACK 119C  
 RED WILBAR DOLL 253E  
 RED LAZY MC DOLL 25R

BOLT EPDS	CE	BW	WW	YW	MCE	MM
	14.2	-3.3	29	50	6.5	21
STATS	BW	AWW	AYW	AOD	CES	
	70	634	1159	3	★★★	

- Moderate framed heifer bull
- Great haired and nice headed



## 55 RED WILBAR *Razor* 664H

13/02/2020 2159953 **WJD 664H**

DKF ELIMINATOR 15A

RED DKF RAZOR 55C

DKF MISS NET WORTH 21A  
RED HOWE ADVANCER 88R

RED WILBAR LANA 353X

RED WILBAR LANA 432P

BOLT EPDS	CE	BW	WW	YW	MCE	MM
	11.9	-0.7	55	95	6.6	22

STATS	BW	AWW	AYW	AOD	CES
	80	728	1301	10	★★

- Big bodied and well balanced
- Indexed 105 at yearling
- Maternal brother sold to Dundurn Grazing



## 56 RED WILBAR *Pandemonium* 669H

15/02/2020 2159954 **WJD 669H**

DKF ELIMINATOR 15A

RED DKF RAZOR 55C

DKF MISS NET WORTH 21A  
RED CROWFOOT RUMBLER 3182A

RED WILBAR LANA 823C

WILBAR LANA 59U

BOLT EPDS	CE	BW	WW	YW	MCE	MM
	11.8	-1.6	51	78	6.2	21

STATS	BW	AWW	AYW	AOD	CES
	76	712	1164	5	★★

- Complete, balanced and attractive
- Dam is a beautiful cow with an interesting pedigree
- Maternal sister produced a top selling bull in 2020 to Blairswest Land & Cattle



## 57 RED WILBAR *Laramie* 662H

12/02/2020 2159952 **WJD 662H**

DKF ELIMINATOR 15A

RED DKF RAZOR 55C

DKF MISS NET WORTH 21A  
RED COCKBURN INDEED 439B

RED WILBAR BAYBERRY 139D

RED WILBAR BAYBERRY 347B

BOLT EPDS	CE	BW	WW	YW	MCE	MM
	10.1	0.1	57	97	5.2	19

STATS	BW	AWW	AYW	AOD	CES
	80	706	1265	4	★★

- Stout made
- Maternal brother sold to AJ's Acres (ON)
- Dam has a beautiful udder





58

WILBAR *Barracuda* 794G



EPDS	
CE	6.0
BW	0.6
WW	38
YW	62
MCE	11.0
MM	22
STATS	
BW	82
AWW	780
AYW	1202
AOD	3
CES	***

30/03/2019  
WJD 794G  
2111484

PLEASANT VALLEY LUTE 1207  
WILBAR BARRACUDA 716C  
WILBAR ERICA 73W

PM AVIATOR 19'14  
WILBAR JENNIFER 151D  
WILBAR JENNIFER 614B

- Sired by our 2016 high selling bull
- Dam is a model Aviator daughter with a Countdown son in the yearling section

59

WILBAR *Rewind* 791G



STATS	
BW	93
WW	702
YW	1210
AOD	7
CES	*

24/03/2019  
WJD 791G  
No Papers

BROOKING BANK NOTE 4040  
BROOKING REWIND 6023  
BROOKING MAUREEN EMILIE 350

WILBAR LEGACY 452Y  
WILBAR ERICA 218A  
BREED CREEK ERICA 944

- Sells with no papers
- Deep sided, big ribbed option for your cows
- Dam has been highly productive and has a near perfect udder



60

RED WILBAR *Ace* 482G



BOLT EPDS	
CE	12.8
BW	-1.4
WW	49
YW	77
MCE	9.2
MM	18
STATS	
BW	74
AWW	734
AYW	1208
AOD	2
CES	***

20/02/2019  
WJD 482G  
2099083

RED BAR-E-L DOUBLE DEUCE 198Y  
WILBAR BLACK ACE 167D  
WILBAR SCAARA 869Z

PLEASANT VALLEY LUTE 1207  
WILBAR TINSEL 235E  
RED WILBAR TINSEL 17U

- Highlight red two year old
- Long bodied, smooth shouldered, proud look
- Interesting twist on pedigree
- Dam is a donor candidate in our outcross program

61

RED WILBAR *Motivate* 502G



BOLT EPDS	
CE	12.7
BW	-0.9
WW	39
YW	59
MCE	7.5
MM	23
STATS	
BW	84
AWW	723
AYW	1188
AOD	2
CES	**

01/03/2019  
WJD 502G  
2109837

TER-RON MOTIVATOR 4B  
RED TWIN HERITAGE MOTIVATE 57E  
RED TWIN HERITAGE CHER 3B

RED COCKBURN INDEED 439B  
RED WILBAR WILBAR TROPHY 306E  
RED WILBAR TROPHY 684Y

- Dam is maternal sister to 2018 National Champion Red Wilbar Escobar 251E
- Moderate birth weight, good haired, very complete and attractive
- Well balanced with good structure





**62**

**WILBAR *Rewind* 795G**

07/04/2019 2111485 **WJD 795G**

BROOKING BANK NOTE 4040

**BROOKING REWIND 6023**

BROOKING MAUREEN EMILIE 350

PLEASANT VALLEY LUTE 1207

**WILBAR LUCY 724C**

WILBAR LUCY 235X

EPDS	CE	BW	WW	YW	MCE	MM
	8.0	0.2	52	87	11.0	18
STATS	BW	AWW	AYW	AOD	CES	
	78	794	1307	4	★★	

- Feature black two year old
- Stout, stylish, hairy
- Dam is perfect uddered and big bodied
- Maternal brother to the dam of 857H (Lot 10)



**63**

**WILBAR *Ace* 786G**

15/03/2019 2111483 **WJD 786G**

RED BAR-E-L DOUBLE DEUCE 198Y

**WILBAR BLACK ACE 167D**

WILBAR SCAARA 869Z

CURRIE NEW DAY 6P

**WILBAR RUBY 689T**

WILBAR RUBY 700M

EPDS	CE	BW	WW	YW	MCE	MM
	2.0	1.9	34	71	6.0	26
STATS	BW	AWW	AYW	AOD	CES	
	82	789	1298	12	★★	

- Solid, all around bull
- Excellent footed
- Dam has been a never miss cow, raising 12 natural calves to date
- Homozygous black



**64**

**RED WILBAR *Indeed* 515G**

21/03/2019 2111073 **WJD 515G**

RED TOWAW INDEED 104H

**RED COCKBURN INDEED 439B**

RED WILBAR CORA 443P

RED WILBAR OFF TOPIC 380B

**RED WILBAR HANA 30D**

RED WILBAR HANA 402P

BOLT EPDS	CE	BW	WW	YW	MCE	MM
	12.2	-1	43	70	7.3	24
STATS	BW	AWW	AYW	AOD	CES	
	80	751	1257	3	★★★	

- Long, smooth calving ease bull
- Sire is maternal brother to Speed and Ribeye
- Son previously sold to MDF Red Angus, Glaslyn



## 65 RED WILBAR *Jack* 505G

02/03/2019 2111097 WJD 505G

RED TER-RON PARKER 34A

RED LAZY MC JACK 119C

RED LAZY MC FIREFLY 4Y  
RED TER-RON RELOAD 703T

RED WILBAR SOXRO 897Z

RED WILBAR SOXRO 106U

BOLT EPDS	CE	BW	WW	YW	MCE	MM
	8.5	1.1	50	76	2.5	18
STATS	BW	AWW	AYW	AOD	CES	
	94	764	1236	7	★	

- Maternal brothers sold to Little de Ranch, Turtleford and MDF Red Angus, Glaslyn
- Maternal sister was shown successfully by Owen in 2019
- Extremely long sided, big topped with lots of hip
- Power bull backed by maternal strength



## 66 RED WILBAR *Jack* 461G

09/02/2019 2129128 WJD 461G

RED TER-RON PARKER 34A

RED LAZY MC JACK 119C

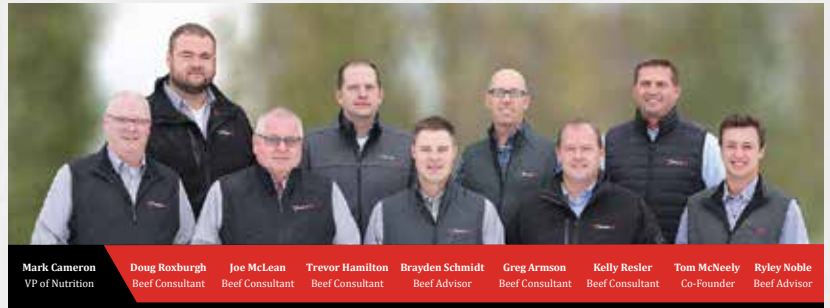
RED LAZY MC FIREFLY 4Y  
RED LAZY MC REDMAN 63X

RED WILBAR ANGIE 344B

RED BWB ANGIE 66'01 OF DESIGN

BOLT EPDS	CE	BW	WW	YW	MCE	MM
	9.8	-0.2	43	73	3.9	18
STATS	BW	AWW	AYW	AOD	CES	
	91	654	1194	5	★	

- Was used in our commercial herd in 2020
- Nice made bull out of a consistent producing dam
- 40 cm scrotal as a yearling
- Maternal brother sold to Norheim Ranching



Mark Cameron VP of Nutrition | Doug Roxburgh Beef Consultant | Joe McLean Beef Consultant | Trevor Hamilton Beef Consultant | Brayden Schmidt Beef Advisor | Greg Armonson Beef Consultant | Kelly Resler Beef Consultant | Tom McNeely Co-Founder | Ryley Noble Beef Advisor

It is a pleasure to be working with the Willms family at Wilbar Cattle Co. The Wilbar crew has raised an impressive set of bulls for their 26th Annual Tools of the Trade Bull Sale. The Willms family has been raising Angus cattle for many years, and their commitment to the Angus breed and raising quality bulls is evident by the bulls they have on offer.

The Wilbar cowherd utilizes an organic mineral package throughout the year, which is essential to the overall health and longevity of the sale bulls on offer. They are slowly developed on a forage-based diet balanced to maximize the genetic potential and promote lean muscle growth.

The diet utilizes an organic mineral package to enhance the bull's immunity and complement its growth patterns. Rumen health must stay a priority throughout every stage of the bull's development. The bulls' nutrition and development and the entire cow herd are continually monitored to meet environmental and season conditions to complement their overall health.

If you have any questions about the nutrition or sale bulls, please feel free to contact me. Best of luck to the Wilbar Cattle crew on sale day!

## 67 RED WILBAR *Jack* 513G

17/03/2019 2111068 WJD 513G

RED TER-RON PARKER 34A

RED LAZY MC JACK 119C

RED LAZY MC FIREFLY 4Y  
RED MESSMER PACKER S008

RED WILBAR CORA 40A

RED HEAD CORA 159L

BOLT EPDS	CE	BW	WW	YW	MCE	MM
	9.9	0.2	57	93	5	19
STATS	BW	AWW	AYW	AOD	CES	
	89	766	1303	6	★	

- Bigger framed, performance bull
- Dam is a consistent producer of growthier, power bull
- Backed by the renowned Cora cow family



**Brayden Schmidt**  
*Beef Advisor*

**(403) 439-0043**

brayden.schmidt@bullseyefeeds.ca





## Commercial Heifers

On offer is our entire commercial open replacement heifer pen. These heifers are out of straight Angus or Red Angus cows. As a group of replacements, they are deep sided, sound and attractive with lots of hair. Maternally strong, they will make a great addition to your commercial herd. They are April and May born and will all be palpated prior to the sale. The heifers will be sold in pens of 5.

Lot 68	
Lot 69	
Lot 70	
Lot 71	
Lot 72	

All sale cattle will be videoed ahead of the sale. Videos will be available online at [www.wilbarcattle.com](http://www.wilbarcattle.com).

All sale cattle will be penned immediately north of the sale barn and will be available for viewing prior to the sale.

### Terms

Payment due at the time of purchase. The right of property shall not pass until settlement has been made. All cattle sell under the standard terms and conditions of the Canadian Angus Association. All information in this catalogue is the most current available at press time. Any announcements made sale day supersede catalogue information.

Each animal becomes the risk of the purchaser at the point of sale.

Wilbar Cattle Co. reserves the right to collect semen on any bull for in-herd use only, at the seller's expense and buyer's convenience.

Scrotal circumference, ultrasound data and current weights will be available sale day.

All bulls will be semen tested and fully guaranteed. Bulls may remain at Wilbar Cattle Co. until May 1, 2021.

Bulls will be delivered to your yard or central points in Western Canada.

Wilbar Cattle will also provide assistance with trucking to Eastern Canada and the U.S.

All heifers will be palpated for breeding soundness.

Please make arrangements to pick up heifers before April 1, 2021.

### Liabilities

All persons attend the sale at their own risk. The sellers, facility owner and sale staff assume no liability, legal or otherwise for any accidents that occur.

### Pedigree Estimates

Pedigree Estimates (PE) are created on the projected mating of the animal's sire and dam based on averages of the two, creating estimated values that do not hold the same accuracy of actual EPDs issued from the association and should be used as such.

#### AVERAGE BLACK ANGUS EPDS

CE	BW	WW	YW	MCE	MM
3.4	2.1	48	86	7.0	22

#### AVERAGE RED ANGUS BOLT EPDS

CE	BW	WW	YW	MCE	MM
11.1	-0.8	54	84	6.3	23

#### Glossary

BW	Birth Weight
AWW	Adjusted Weaning Weight
AOD	Age Of Dam

#### Calving Ease Scores (CES)

- ★★★ Recommended for use on heifers for little to no assistance on normal births
- ★★ Recommended for use on larger heifers for minimal assistance on normal births
- ★ Recommended for use on cows



# Dams of Wilbar Bulls



BW 617Y



BW 638S



WRAZ 94Z



BW 14A



BW 357X



BW 869Z



WJD 217X



WJD 409E



WJD 584B



WJD 6D



DBR 22B



WJD 689T



Return Undeliverable  
Canadian Addresses To:

T Bar C Cattle Co. Ltd.  
Box 2330  
Warman, SK S0K 4S0



# SUMMARY OF OFFERING

## 57 BLACK & RED ANGUS YEARLING BULLS

## 10 RED & BLACK ANGUS TWO YEAR OLD BULLS

## 30 COMMERCIAL HEIFERS

### *2020 Highlights*



Red Wilbar Element 421G  
to Rivers Edge Red Angus



Red Wilbar Motivate 480G  
to Blairswest Land & Cattle



Wilbar Rewind 701G  
to Lost River Farming



Wilbar Countdown 710G  
to Eagle Creek Colony



Created by Today's Publishing